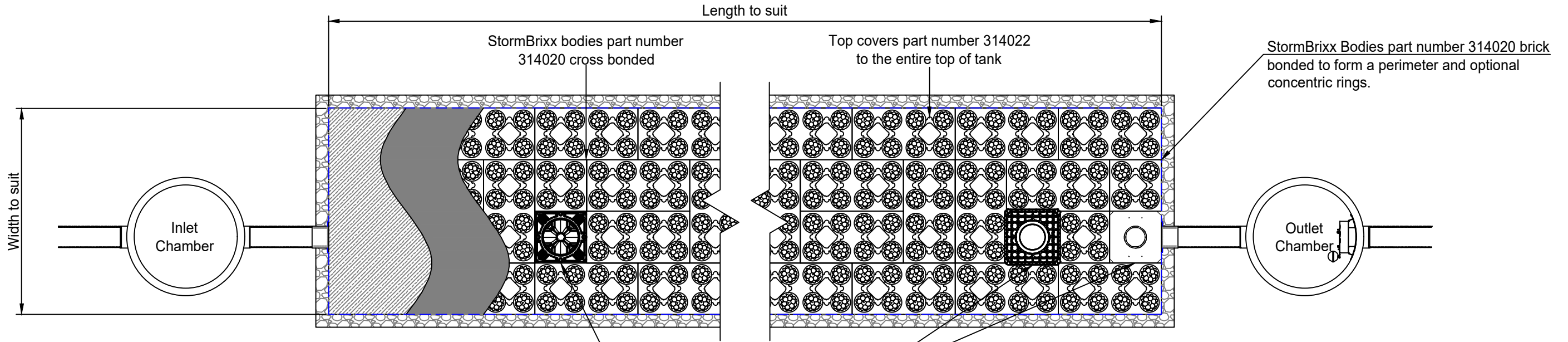


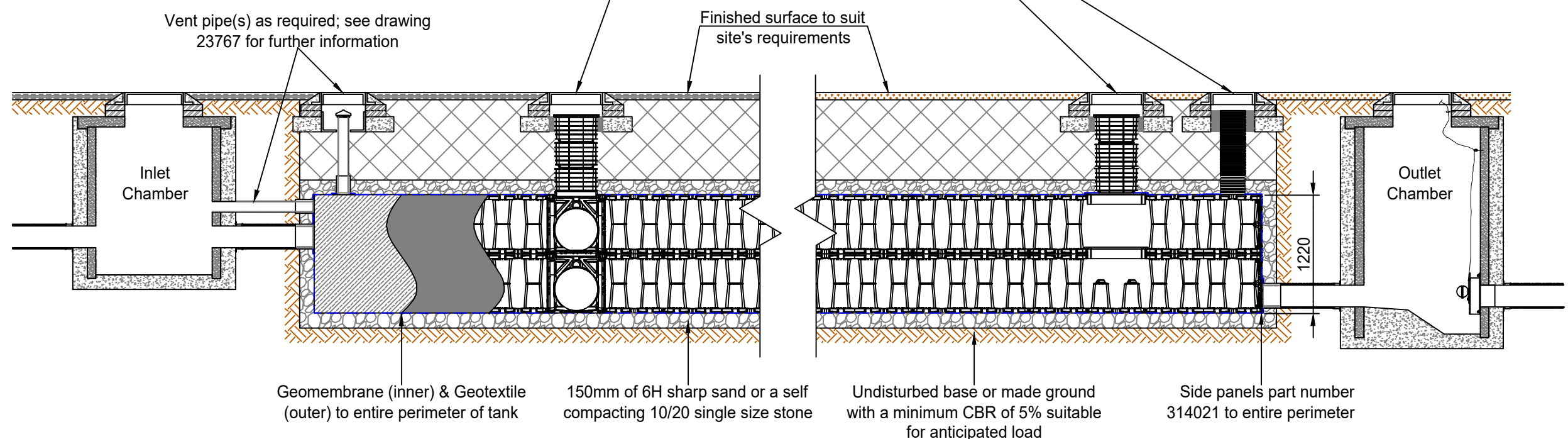
1 2 3 4 5 6

Plan




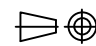
Inspection to suit requirements; see drawing 23768 for further information

Elevation



Minimum cover depths ⁽¹⁾ over the top of ACO StormBrixx HD	
Location	Minimum cover depth (m) ⁽²⁾
Non-Trafficked areas i.e landscaping	0.5 ⁽³⁾
Car parks, vehicles up to 2500kg gross mass	0.6
Car parks, occasional vehicles greater than 2500kg ⁽⁴⁾ mass	0.75
Occasional HGV traffic up to 44000kg GVW (HA loading)	Please consult ACO

- (1) Assumed 27° load distribution angle through fill material and overlaying surface asphalt or block paving
- (2) Please check minimum frost check cover depths for geographical location
- (3) Minimum cover depth to avoid accidental damage from gardening/landscaping work
- (4) Occasional trafficking by refuse collection or similar vehicles (typically one per week)

A	25/10/17	Initial Issue	P.J
Version	Date	Description	Name
 ACO Technologies plc		ACO Business Park Hitchin Road Shefford Bedfordshire SG17 5TE, UK Tel: 01462 816666 www.aco.co.uk	
		Drawing Number: 23760 Title: ACO StormBrixx HD 2 Layer Attenuation Tank Installation Detail Drawing	
Created by: P.J	Released by: L.D	Projection: ISO-A 	Units: mm
Created at: 25/10/17	Released at: 25/10/17		Format: A3
Replacement for: E1-E01-1101-3	Replaced by: -	Information contained in this drawing is copyright property of ACO Technologies plc. Any reproduction in part or whole without written permission of ACO Technologies plc is prohibited	
		Scale: 1 : 50	Sheet: 1 of 1

1 2 3 4 5 6